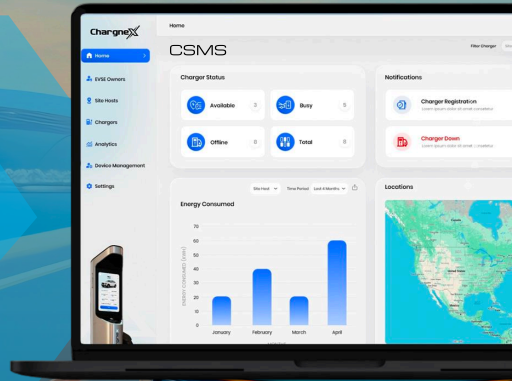


Level 2 AC Smart EV Charger



Scan To
Know More



Specifications:

Electrical Specification

- Voltage : 208/240V L1, L2, Split phase*
- Current : Upto 80 Amps
- Power Output : Upto 19.2 KW
- Connector Type : SAE J1772/Type 1*
- *Note- Customisable as per Region

Connectivity & Communication

- OCPP Compliance V2.0.1
- ISO 15118-2 : Plug & Charge (ISO15118-20 Smart Charging)
- WiFi, Ethernet, Bluetooth & 4G Enabled

User Interface

- Charger App With 10 Inch Capacitive 1K08 Display
- Mobile App For Payments, Start/Stop & Remote Monitoring
- RFID, NFC Enabled EVSE with Smart Charger App

Smart Feature

- CSMS Charger Management System
- Built in MID Energy Metering
- Smart Quad-Core ARM Cortex A53 Processor
- Charge Share: Unlock Charger via App to let others Charge & Earn

Payment & Access Control

- EMV Card Readers - Tap to Pay, Start/Stop Charging, Plug & Charge
- Mobile Payment
- RFID Cards - Membership & Subscription

Enclosure

- Charger : IP65
- Junction Box : NEMA 4X, Hardwired
- Operating Temperature : Typically -30°C to +70°C (-22°F to +158°F)
- Material : ABS Plastic, UV-Resistant, Corrosion-Proof

Installation

- Wall Mount
- Pedestal Mount (Optional)
- Hardwire Junction Box (For Current > 50A) (Optional)
- Wirehook
- Cable Length 5 Meters (Customisable)